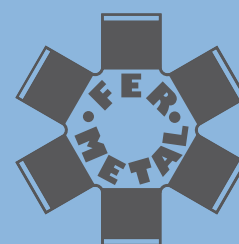
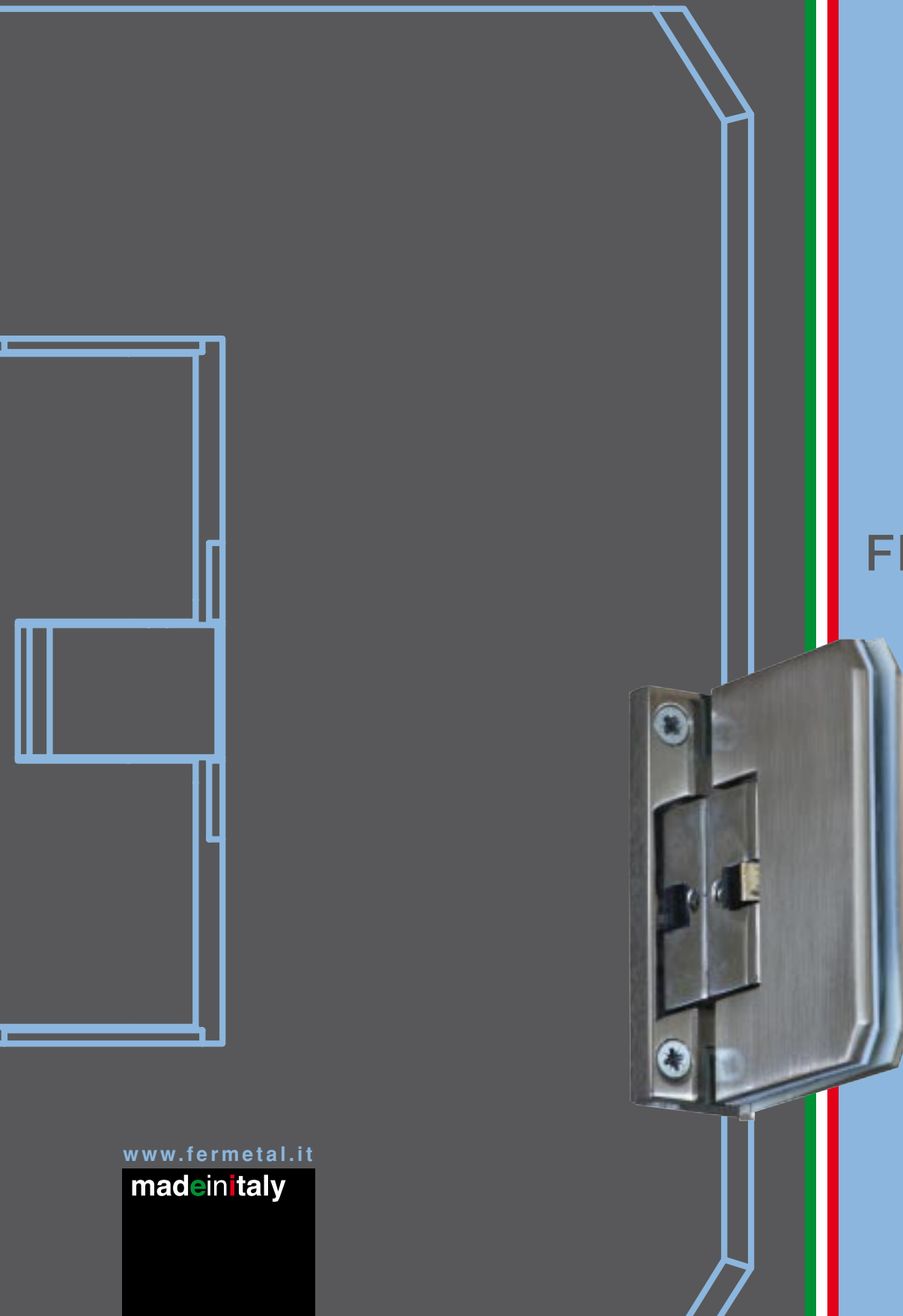


FEDOR

Door hinge with automatic closing



FER METAL

www.fermetal.it
madeinitaly

FEDOR

8,10,12

+/-90°

100

FINITURE FINISHING



GUN-METAL LUCIDO/BRIGHT



BIANCO
WHITE



COPPER-BRONZE LUCIDO/BRIGHT



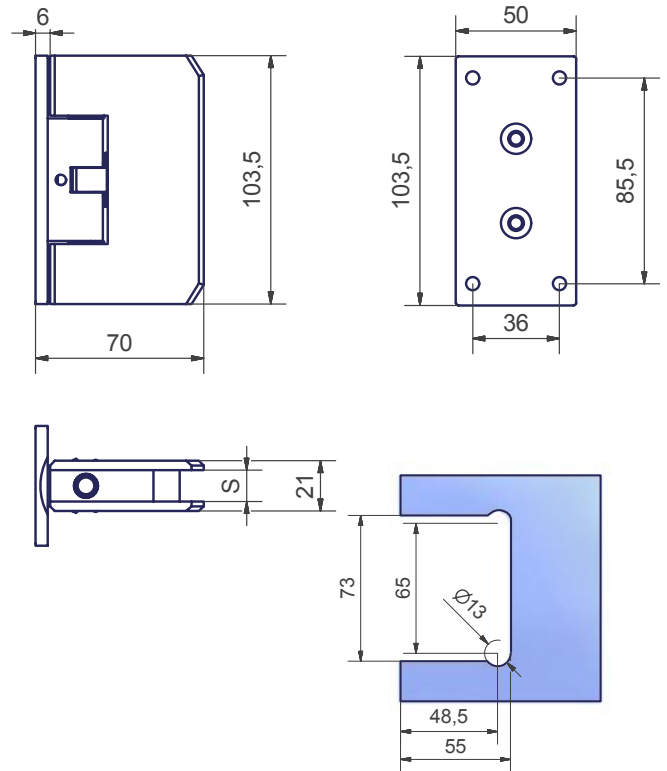
NERO
BLACK



9010002

Automatic hinge – wall fixing with asymmetric plate
Stop 0°+/-90°

Material: stainless steel AISI304 and brass.
Made out by mechanical processing



S= 10/12

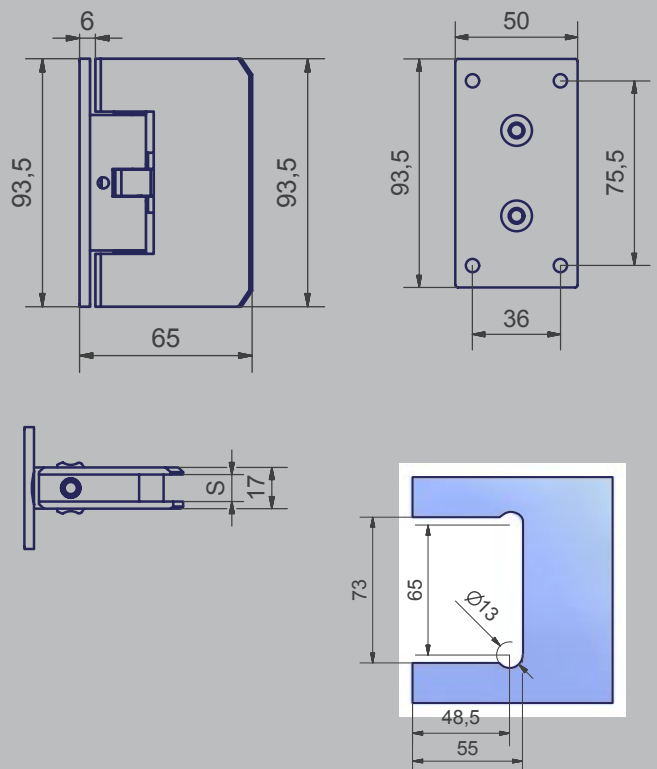
L max=1000mm

Peso max=100kg

90100012

Automatic hinge – wall fixing with asymmetric plate
Stop 0°+/-90°

Material: stainless steel AISI304 and brass.
Made out by mechanical processing



S= 8/10

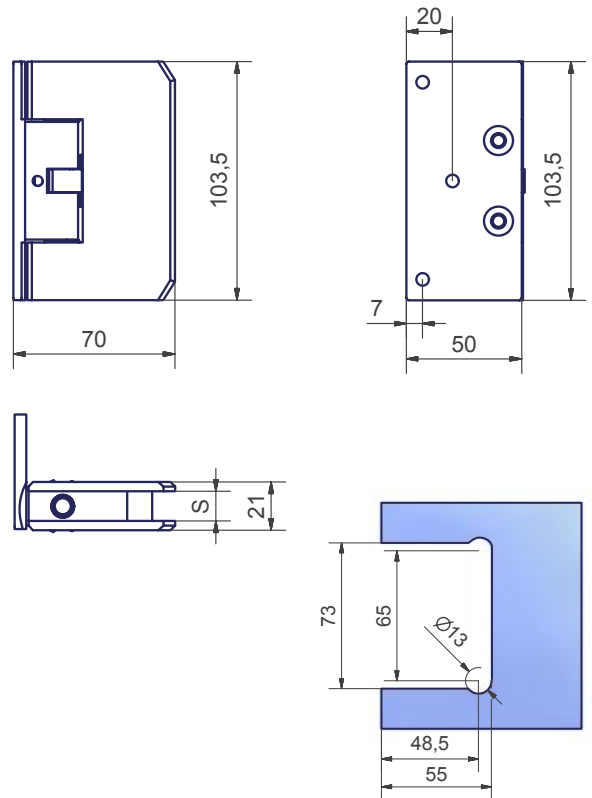
L max=900mm

Peso max=70kg

90100003

Automatic hinge – wall fixing with shifted plate
Stop 0°+/-90°

Material: stainless steel AISI304 and brass.
Made out by mechanical processing



S= 8/10/12

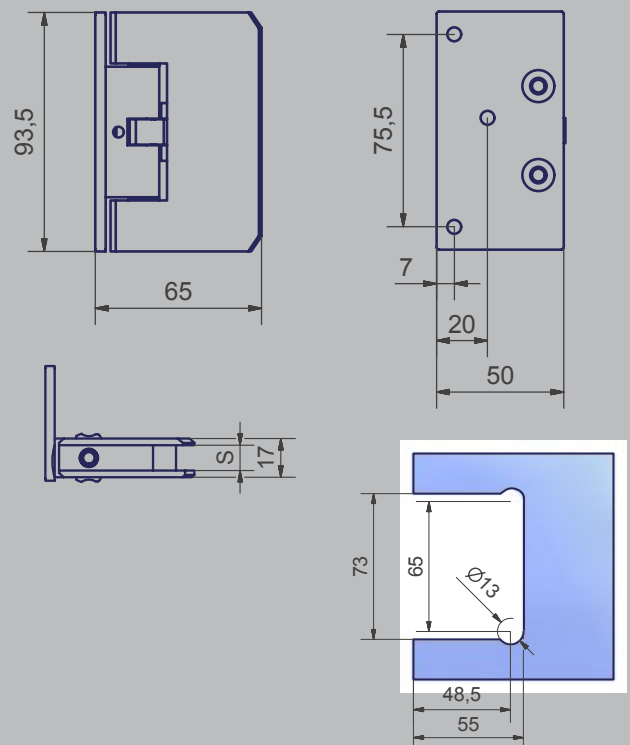
L max=1000mm

Peso max=100kg

90100013

Automatic hinge – wall fixing with shifted plate
Stop 0°+/-90°

Material: stainless steel AISI304 and brass.
Made out by mechanical processing



S= 8/10

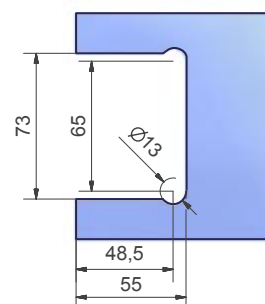
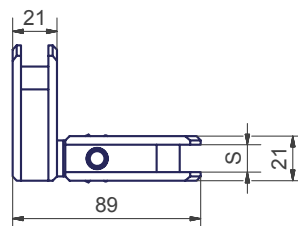
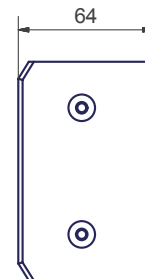
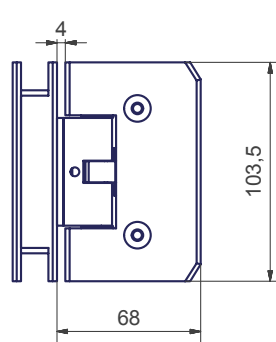
L max=900mm

Peso max=70kg

90100004

Automatic hinge – glass fixing 90°
Stop 0°+/-90°

Material: stainless steel AISI304 and brass.
Made out by mechanical processing



S= 10/12

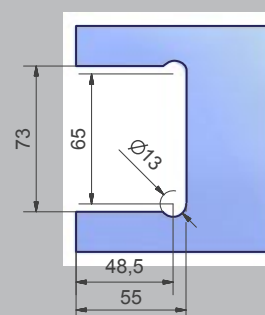
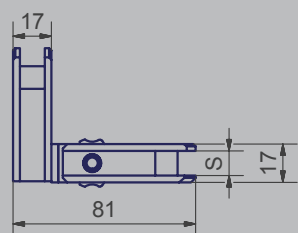
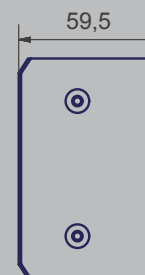
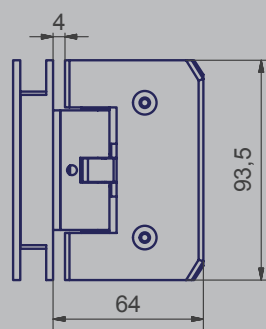
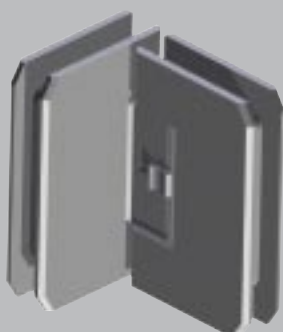
L max=1000mm

Peso max=100kg

90100014

Automatic hinge – glass fixing 90°
Stop 0°+/-90°

Material: stainless steel AISI304 and brass.
Made out by mechanical processing



S= 8/10

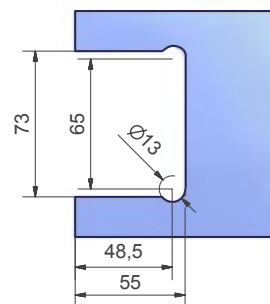
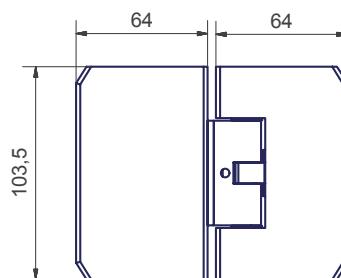
L max=900mm

Peso max=70kg

9010006

Automatic hinge – glass fixing 180°
Stop 0°+/-90°

Material: stainless steel AISI304 and brass.
Made out by mechanical processing



S= 10/12

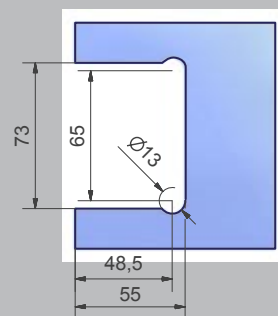
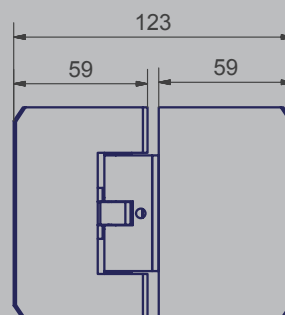
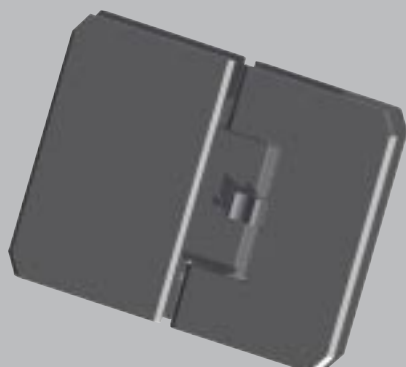
L max=1000mm

Peso max=100kg

90100015

Automatic hinge – glass fixing 180°
Stop 0°+/-90°

Material: stainless steel AISI304 and brass.
Made out by mechanical processing



S= 8/10

L max=900mm

Peso max=70kg



FER METAL s.n.c.
di Feriseri Francesco e C.

■ Sede legale:
Via Marconi. 141/A
25071 Agnosine (BS) - Italy

■ Uffici e stabilimento:
Via Madonna di Calchere, 32/34
25071 Agnosine (BS) - Italy
Tel. + 39 0365 896168
Fax + 39 0365 897454

info@fermetal.it
■ www.fermetal.it

FER METAL

"

"

+7 499 705 88 76
+7 804 555 12 76

info@doorskit.ru
www.doorskit.ru